

# ENERGY LINKS ALL



 Midea

# Business Groups

<p>2023</p> <p><b>51.68</b> B USD</p> <p>Total Revenue</p>	<p>2023</p> <p><b>4.66</b> B USD</p> <p>Net Profit</p>	<p>CY 2023</p> <p><b>190</b>k</p> <p>Number of Employees</p>	<p>Credit Ratings</p> <p><b>A/A3/A</b></p> <p>S&amp;P/Moody's/Fitch</p>
--	--	--	---

	<p>Forbes GLOBAL 2000 2024</p>	<p>Global 500 Brand Finance 2023</p>	<p>Brand Finance Tech100 2023</p>
---	--	--	---

**# 277**  
2024 Fortune  
Global 500

**# 205**  
2024 Forbes  
Global 2000

**# 198**  
Brand Finance 2023  
Top 500  
Most Valuable Brands

**# 36**  
Brand Finance 2023  
Top 100  
Most Valuable Tech Brands

# Business Segments



## Smart Home



providing fully smart home and services with optimal experiences

COLMO Midea WAHIN

TOSHIBA LittleSwan eureka

PELONIS MK Master Kitchen comfee

## Industrial Technology

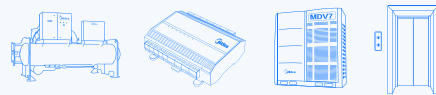


Industrial Technology provide Green Energy and Core Industrial Components with green and efficient products and technical solutions.

GMCC Welling HICONICS 美的

SERVOTRONIX SUNYE MR SEMI TOSHIBA

## Building Technology



providing comprehensive solutions and services for buildings

Midea CLIVET MI 鲲鹏 K WING

LINVOL WINONE iBUILDING 美的楼宇科技

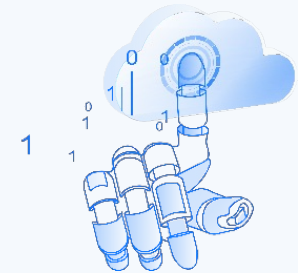
## Robotics & Automation



the cornerstone of smart manufacturing robot-based automation solutions

KUKA SWISSELOG swisslog healthcare

## Innovative Businesses

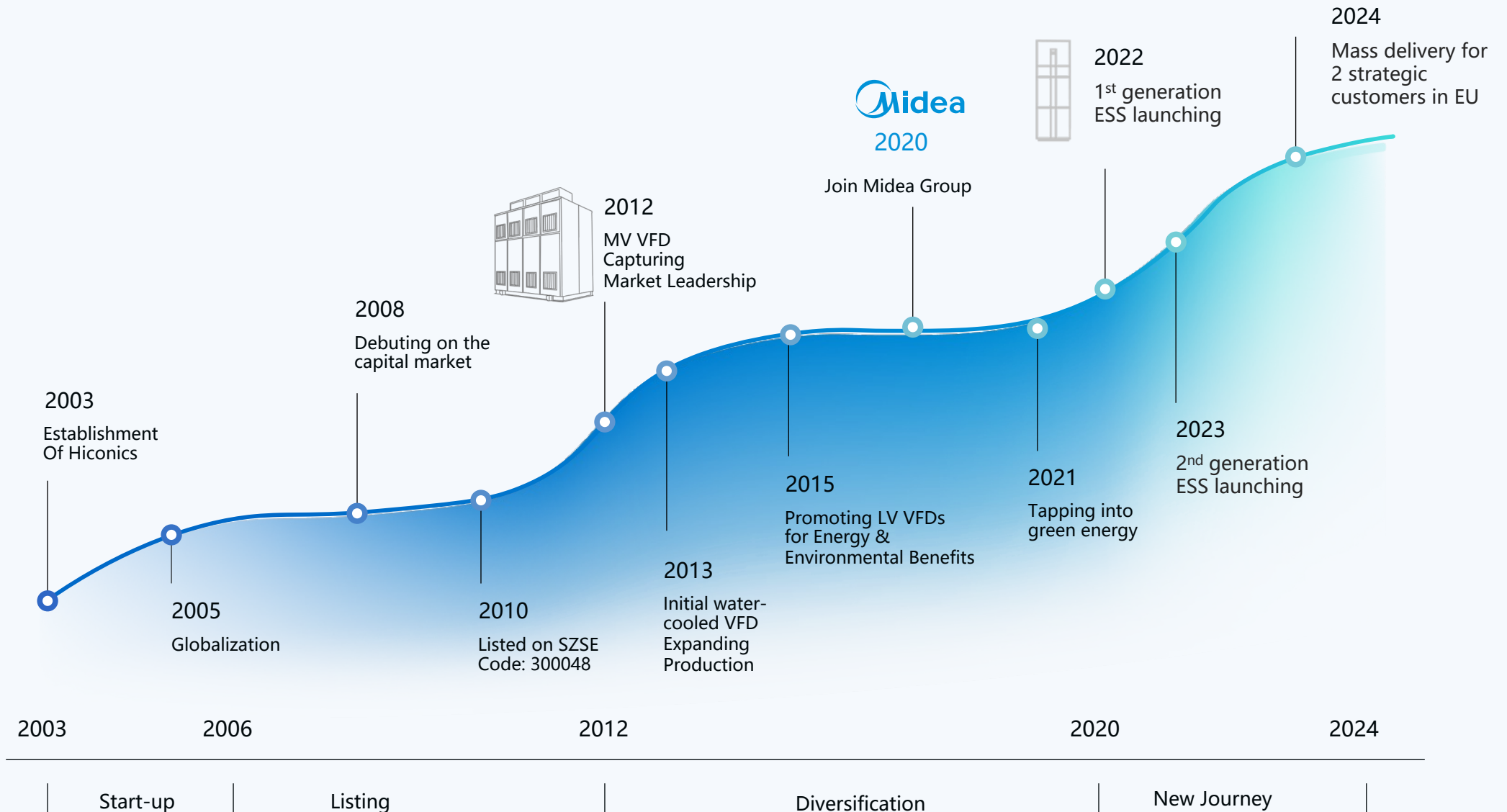


New businesses incubated amidst digital transformation

Midea Cloud 美云智数 安得 ANNTO

Midea 美智光电 WDM 万东

# A sub-company focusing on the new energy industry under the Midea Group



**Why HICONICS?**

# HiEnergy RESS Products Are Jointly Developed By 3 LEVEL R&D System of Midea and Hiconics

## HICONICS

+

## Midea

### HICONICS R&D Center

Product Practical Application Research(PACK,BMS,PCS EMS etc.)  
Localized Product Design and Development  
EMS development

**23.1%**  
R & D Investment

**32%**  
Masters & PhDs

**306 & 2K+**  
R&D HC



### Cooperate Research Center

- Basic technologies like hydromechanics, solid mechanics, and thermodynamics ;
- Intelligent technologies, such as artificial intelligence and sensors ; and
- Future technologies including IPM , Wireless Power Transmission , and Robotic Technologies.

### Green Energy Institute

- ESS Integration Research
- General BMS Technology Research
- PACK Technology Research

HiEnergy RESS Products can Meet Industry-leading Standards

## Our Quality Capability

Total Planned Investment

---

**18.07** M USD

Covers an Area of

---

**6,000** M<sup>2</sup>

Our Target  
global industry leading lab in 2026

---

**TOP3**

# HiEnergy RESS Products can Meet Industry-leading Standards

## Our Quality Capability

### Test Capability

- Raw material and parts
- System level: Provide Safety, EMC, electrical performance, off and on-grid operation
- Failure parts analysis



### Lab Qualification

The laboratory has been certified by internationally renowned certification organization. Such as CNAS, CQC, TUV-Rheinland, TUV-NORD, TUV-SUD, CSA, UL, SGS



# Our Manufacture Capability

## Lean

- ✓ Intelligentization
- ✓ Digitization
- ✓ Complete process quality control system

## Capacity

Beijing: 0.6GWh/year, 60,000sets/year  
Anqing: 2GWh/year, 200,000sets/year  
Lead time: 30 days

2 Main Manufacture Sites  
Beijing/ AnQing



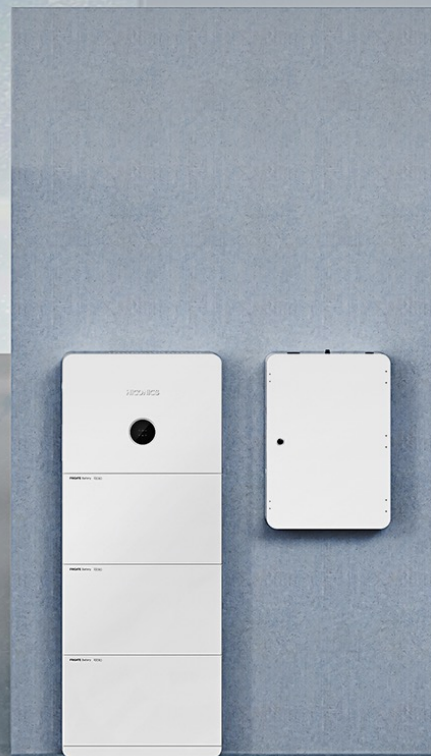
# HICONICS RESS Product Overview



**ALL-IN-ONE RESS**  
1ph: 3.68-6kW | 5-30kWh  
3ph: 8-15kW | 10-40kWh



**PV INVERTER**  
3-6kW



**ALL-IN-ONE RESS**  
US Model Split-phase RESS  
2<sup>nd</sup> Generation 1/3ph RESS



**EV CHARGER**  
1ph: 7kW  
3ph: 11 22kW

**BALCONY PV SOLUTION**  
800W

# All In One Energy Storage system

Single Phase 3.68~6kW / 5~30kWh



## Extreme Safety

- 5 Level Protection
- Advanced Thermal Management
- System Function Safety
- Cyber Security for Operation & Data

## Easy Installation

- Stackable Modular Design
- Quick Plug, No Extra Wiring
- Installation time <20 min
- 5 min Fast Commissioning

## Residential Integration

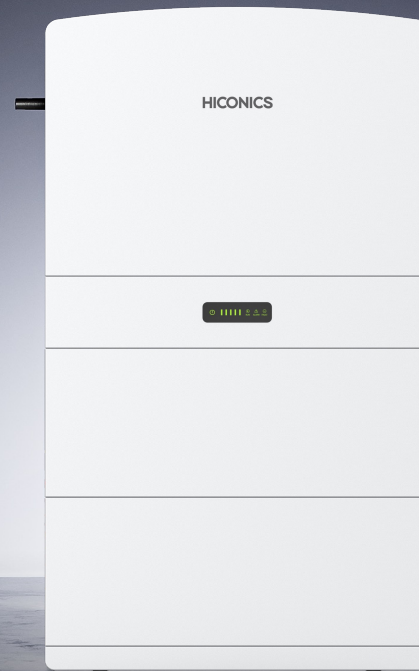
- IP65 Protection & -20~55 operation range
- Integration with Heat pump
- Super Slim, Space Saving
- Aesthetic & Harmonious Design

## Smart Control

- 3rd Party EMS Compatibility
- TOU(6 time schedule setting and maximum power buying setting), save more + VPP Ready
- Seamless On/Off Grid

# All In One Energy Storage system

Three Phase 8~15kW / 10~40kWh



## Extreme Safety

5 Level Protection  
Advanced Thermal Management  
System Function Safety\*  
Cyber Security for Operation & Data \*

## Easy Installation

Stackable Modular Design  
Quick Plug, No Extra Wiring  
Installation time <20 min  
5 min Fast Commissioning

## Residential Integration

IP 65 Protection & -20~55 degree operation range  
Integration with Heat pump  
Super Slim, Space Saving  
Aesthetic & Harmonious Design

## Smart Control

3rd Party EMS Compatibility  
TOU(6 time schedule setting and maximum power buying setting), save more  
VPP Ready  
Seamless On/Off Grid



# Balcony PV System

## Single Phase 800W

Both Silicon Crystalline and Flexible Module are available



### Easy Installation

Plug-play installation, no need professional installer

### Smart control

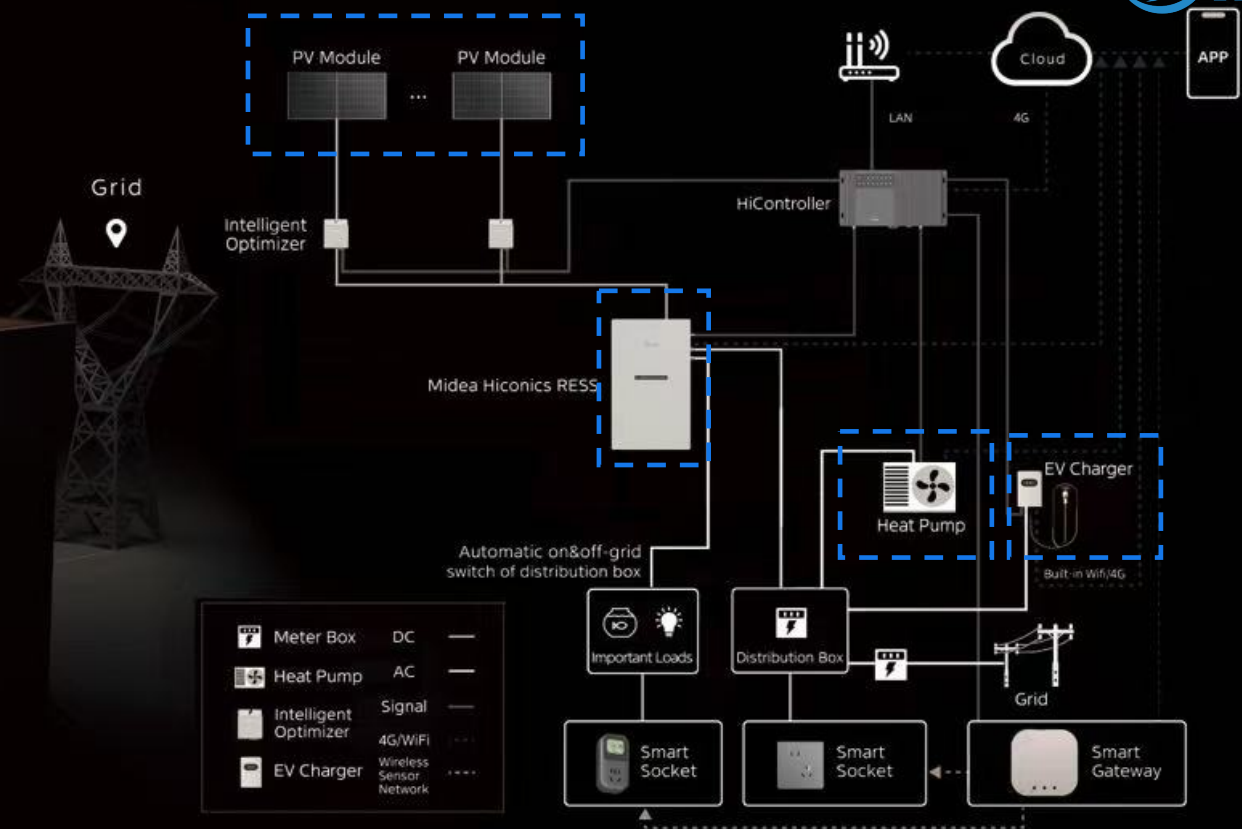
One app for all operation and management

### DIY on Your Own

Install at balcony or Courtyard  
Installation angle can be adjustment based on location

### IP67

Suitable for all environments



# Green Energy Solution

We can integrate photovoltaic power generation, energy storage, heat pump, EV charging, etc., to provide consumers with a one-stop energy solution.

**What for NEXT?**

# New Products for 2025



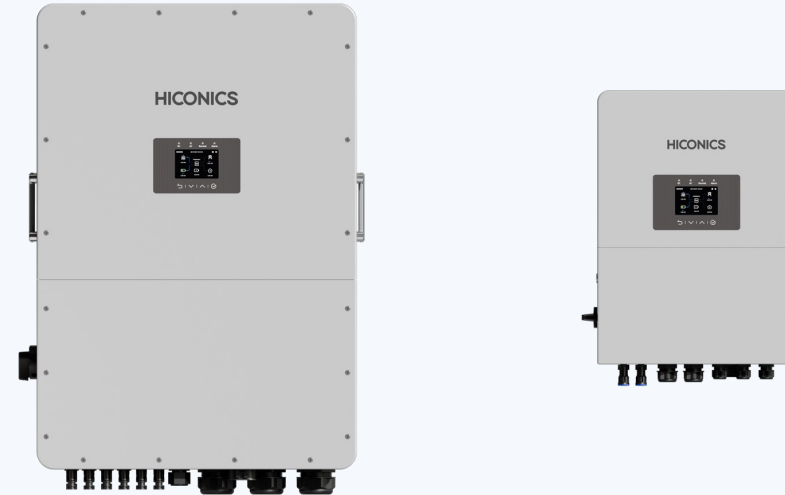
## All-In-One RESS



1ph: 3-6kW | 5-30kWh  
3ph: 5-15kW | 10-40kWh

US Model  
7.6-11.4kW | 10-90kWh

## Stand-Alone Hybrid Inverter



High Voltage Solution  
20-30kW

Low Voltage Solution  
3-6kW

## Supper slim 6.7 inch

Thin design for floor and wall mounted

## 2nd Generation All In One

Single Phase 3~6kW  
Three Phase 5~15kW



### Extreme Safety

- 5 Level cell Protection
- Advanced Thermal Management
- System Function Safety\*
- Cyber Security for Operation & Data

### Easy Installation

- Stackable Modular Design
- Quick Plug, No Extra Wiring
- Installation time <20 min
- 5 min Fast Commissioning

### Powerful

- DC-DC built in, flexible
- 6 system in parallel
- High efficiency
- IP66

### Smart Control

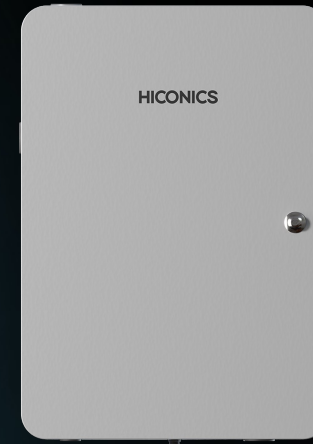
- 3rd Party EMS Compatibility
- TOU(6 time schedule setting and maximum power buying setting), save more
- VPP Ready
- Seamless On/Off Grid

## 4-IN-ONE

7.6~11.4KW Hybrid Inverter  
5KWh Battery Pack  
Smart Gateway for Energy Control & Management  
Online System Monitoring

## Split-Phase for US

Integrated Design  
Extreme Safety  
Energy Independence  
Max. Savings



**Supper slim**  
**6.7 inch**

Thin design for floor and wall mounted

# Stand-Alone Hybrid Inverter

Single phase(LV): 3-6kw  
Three Phase(HV): 20-30kW

## Flexible

80~400V DC input  
Both Lead-acid or Lithium-ion\*

## Powerful

Compatible with generator  
6 system in parallel  
High efficiency  
IP66

## Smart Control

3rd Party EMS Compatibility  
TOU(6 time schedule setting and maximum power buying setting), save more  
VPP Ready  
Seamless On/Off Grid



## Our Service

**10** YEARS  
WARRANTY

---

PCS & Battery Packs

**3** LEVELS  
SUPPORT

---

Online support  
+ local support  
+ experts onsite

**24** HOURS  
RESPONSE

---

Response in time  
Parts stock in EU

 Midea

